

KINLET CLOSE

Approximate Gross Internal Area 733 sq ft / 68.10 sq m

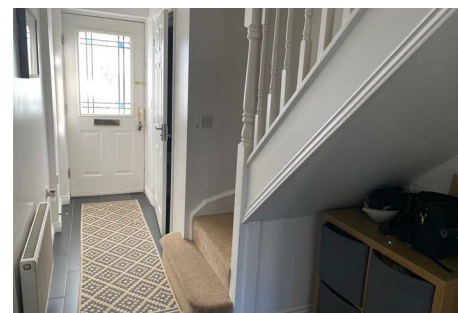
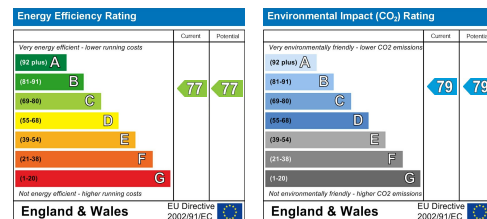


**GROUND FLOOR
GROSS INTERNAL
FLOOR AREA 378 SQ FT**

**FIRST FLOOR
GROSS INTERNAL
FLOOR AREA 355 SQ FT**

Although every attempt has been made to ensure accuracy, all measurements are approximate and no responsibility is taken for any error, omission, or mid-statement. This floor plan is for illustrative purposes only and not to scale. Measured in accordance to RICS standards.

These particulars, whilst believed to be accurate are set out as a general outline only for guidance and do not constitute any part of an offer or contract. Intending purchasers should not rely on them as statements of representation of fact, but must satisfy themselves by inspection or otherwise as to their accuracy. No person in this firm's employment has the authority to make or give any representation or warranty in respect of the property.



33 Kinlet Close Daimler Green, Coventry CV6 3LS

THREE BEDROOMS... END OF TERRACE... CUL-DE-SAC LOCATION... VACANT UPON COMPLETION... NO UPWARD CHAIN... OFF ROAD PARKING FOR TWO VEHICLES... PERFECT INVESTMENT PROPERTY OR GREAT FOR FIRST TIME BUYERS. Located on the sought after development of Daimler Green in Radford, Coventry, this lovely three bedroom end of terrace property needs to be viewed to appreciate what is being offered for sale. Briefly comprising of ground floor cloakroom, kitchen, lounge dining room, three bedrooms, family bathroom, front and rear gardens and off road parking for two cars to the front. Located at the end of a quiet cul-de-sac and within walking distance to the local bowls club, local shops at Jubilee Crescent and main bus routes into Coventry City Centre, its perfect for those looking for their first property, investment purchase (C rated EPC) or those looking to downsize. Call us now to book your viewing.

£199,995

CONTACT INFORMATION

24a Warwick Row, Coventry CV1 1EY

02477 170170

info@matthewjames.uk.com

www.matthewjames.uk.com

Facebook

Twitter

33 Kinlet Close

Daimler Green, Coventry CV6 3LS



- Three Bedrooms
- End Of Terrace
- Off Road Parking For Two Vehicles
- No Upward Chain
- Cul-De-Sac Location
- Ground Floor Cloakroom
- Perfect For First Time Buyer
- Great Investment Property
- 'C' Rated EPC



Front Garden

Entrance Hallway

Ground Floor Cloakroom

4'11 x 2'9 (1.50m x 0.84m)

Lounge Dining Room

15'6 x 13'10 (4.72m x 4.22m)

Kitchen

9'11 x 7'2 (3.02m x 2.18m)

First Floor Landing

Bedroom One

13'11 x 12 (4.24m x 3.66m)

Bedroom Two

8'3 x 6'11 (2.51m x 2.11m)

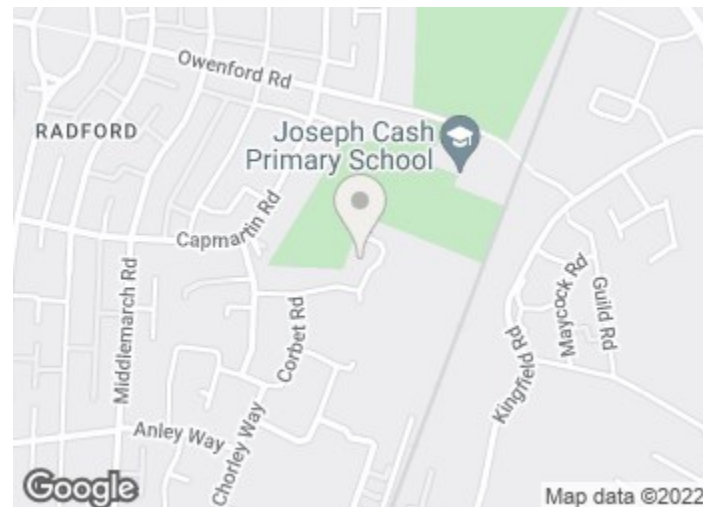
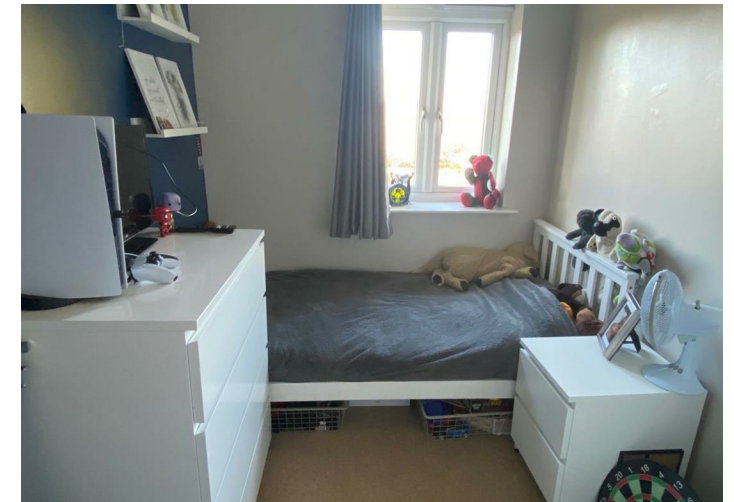
Bedroom Three

9'4 x 6'9 (2.84m x 2.06m)

Family Bathroom

6'2 x 6'2 (1.88m x 1.88m)

Rear Garden



Directions

